

COVER SHEET

1 5 9 9 5 0

S.E.C. Registration Number

C R O W N A S I A C H E M I C A L S

C O R P O R A T I O N .

(Company's Full Name)

K M 3 3 M C A R T H U R H I G H W A Y

B O T U K T U K A N G U I G U I N T O B U L A C A N

NICASIO T. PEREZ

Contact Person

8 2 8 3 8 7 1 9

Company Telephone Number

1 2 3 1

Month Day
Fiscal Year

SUSTAINABILITY REPORT

FORM TYPE

0 5 0 9

Month Day
Annual Meeting

Secondary License Type, If Applicable

Dept. Requiring this Doc.

Amended Articles Number/Section

6 5

Total No. of Stockholders

Total Amount of Borrowings

Domestic

Foreign

To be accomplished by SEC Personnel concerned

File Number

LCU

Document I.D.

Cashier

STAMPS

Remarks = pls. use black ink for scanning purposes



**CROWN ASIA CHEMICALS
CORPORATION**

TOWARDS A SUSTAINABLE FUTURE

ANNUAL SUSTAINABILITY REPORT 2023



In its 34th year, CROWN Asia Chemicals Corporation presents its fifth Annual Sustainability Report entitled, "Towards a Sustainable Future". This report encapsulates our commitment to sustainability, harmonizing our storied legacy with a vision set for the next year to come.

As we reflect on our journey, we envision a future where excellence is synonymous with sustainability. The front cover captures our aspirations — an inspiring vista of a sustainable future, where hydro, solar, and other forward-looking solutions weave seamlessly into the fabric of progress. It is not just an image; it is a testament to the future we aim to be part of, a future we are actively shaping.

Within these pages, discover how CROWN, rooted in a legacy of putting safety and quality first, is steering towards sustainable practices. Explore our initiatives, innovations, and the collective efforts that propel us toward a future where environmental stewardship and business excellence go hand in hand.

As we delve into this report, let us embrace the harmony of our legacy and the radiance of a future where sustainability is not just a goal but a way of being. Here's to the next 35 years and the enduring commitment to excellence and sustainability.

TABLE OF CONTENTS

Introduction	About the Cover	
	Table of Contents	
	About the Report	1
	Message from the Chairman	2
We Are CROWN	Vision, Mission, and Values	3
	Corporate Organization	5
	Board of Directors	6
	CROWN's Product Value Chain	7
	Towards a Sustainable Future	9
CROWN, Putting Safety and Quality First	CROWN at a GLANCE	11
	CROWN 's Sustainable Products	
	CROWN Compounds, Expanding Product Applications	13
	CROWN Pipes, Putting Safety and Quality First	15
	CROWN PPR, Reliable Solutions for Every Water Applications	17
	CROWN HDPE, Durable, High-Pressure Performance	18
	CROWN Thermal Roofing, Your all-weather Cool Roofing Solution	19
	CROWN Septic Tank, An Environment-Safe Septic Tank Solution	21
	CAC, Your Toilet and Bath Essentials	22
CROWN Wire and Cable Protector for Superior Cable	23	
IT Security	Roadmap for IT Security Management	24
Economic Performance	Direct Economic Value Generated and Distributed	25
	Crown as An Economic Partner	26
	Customers as Growth Partners	27
	Anti-corruption	28
Environment Performance	Resource Management	29
	Energy Consumption Within the Organization	29
	Water Conservation and Recycling	30
	Air Quality and Transportation Management	31

TABLE OF CONTENTS

Environment Performance

Solid and Hazardous Wastes	31
Ecosystem Preservation and Biodiversity	32
Environmental Compliance	32
Other Eco-Friendly Practices	33
CROWN's Eco-Friendly Products	34

Social Performance

Employee Management	35
Employee Benefits	36
Employee Training and Development	37
Labor Management Relations	37
Diversity and Equal Opportunity	38
Occupational Health and Safety	38
Labor Law and Human Rights	39
Strategic Capex Investments: Fostering Sustainability Across Operations	40
Supply Chain Management	42
Production Management	44
Warehouse	45
Logistic	46
Relationship with Community	
CROWN's Green Initiative	47
CROWN's Supports Brigada Eskwela	48
CROWN's Lifeblood Initiative	49
CROWN's CSR Partnership	50
Customer Management	53
Marketing	54

Commitment to Supporting Progress

Expanding Horizon	55
Crown Partners	57
Partnership with Professional Groups	58
We Support Progress	59
Sustainability Tree	70
Back Cover	

ABOUT THE REPORT

We have developed our sustainability reports for the last four years as an extensive discussion of our corporate governance, social, environmental, and financial performance as well as our community outreach initiatives.

CROWN has implemented policies intended to keep up with the growing needs of its business operations, making them adaptable and more focused. As the company faces broader challenges amid market developments and rapid changes, shifting mindsets and new technologies.

The company continuously strengthens all aspects of its operations, from manufacturing expansion and diversification of products and services to sales, trade, marketing, business development initiatives, human resources development, employees' welfare and security, financial stability, and growth.

CROWN Asia Chemicals Corporation remains committed to excellence in products and service today and in all the years to come.

NICASIO T. PEREZ

Chief Finance Officer/OIC
(+63) 8283-8719
0917-792-2828
ntperez@crownpvc.com.ph

MESSAGE FROM THE CHAIRMAN & CEO

Dear shareholders, partners, and stakeholders,

I am delighted to address you today with a message that resonates with our collective responsibility towards a better future. I am proud to report that CROWN is firmly positioned at the forefront of the sustainability revolution.

CROWN continues to stride towards a sustainable future. We have embraced the challenges as an opportunity to transform our business into a more resilient and competitive company. Our commitment to sustainability is a core part of our identity. CROWN shows dedication to environmental stewardship by implementing eco-friendly practices throughout our operations and conserving natural resources. Our efficient manufacturing processes, and waste reduction initiatives have not only contributed to a healthier planet but also yielded cost-saving actions to our valued customers.

Beyond profit margins, CROWN believes in creating a positive impact on the communities where we operate. Our initiatives in education and development have touched the people in the communities we are with. Our employee volunteers share their time and effort to be part of community development.

We remain committed to supporting our employees and fostering a diverse and inclusive workplace. Our commitment is evident through our ongoing efforts to provide training and seminars that not only facilitate nonstop learning but also promote the continuous exchange of knowledge.

While we champion sustainability, we also recognize the importance of economic viability. I can confidently state that CROWN is not just a leader in sustainability but also a viable investment choice. Our sustainable practices have enhanced our resilience in the face of global challenges, ensuring consistent returns for our shareholders.



Walter H. Villanueva
Chairman and CEO

As we move forward, we remember that the path to a sustainable future is a collective effort that requires the engagement of all our partners, customers, stakeholders, and the whole community. We invite everyone to join us in this mission to create a profound impact and secure a livable future for generations to come.

I want to express my gratitude to all of you for your support. CROWN is not just a company; it is a community dedicated to creating a sustainable and progressive world. With your continued trust and commitment, we will navigate the challenges ahead and thrive in the face of adversity.

Thank you for being a part of CROWN's path towards a sustainable future.

Warm regards,

WALTER H. VILLANUEVA

Chairman
CROWN Asia Chemicals Corporation

VISION, MISSION & VALUES

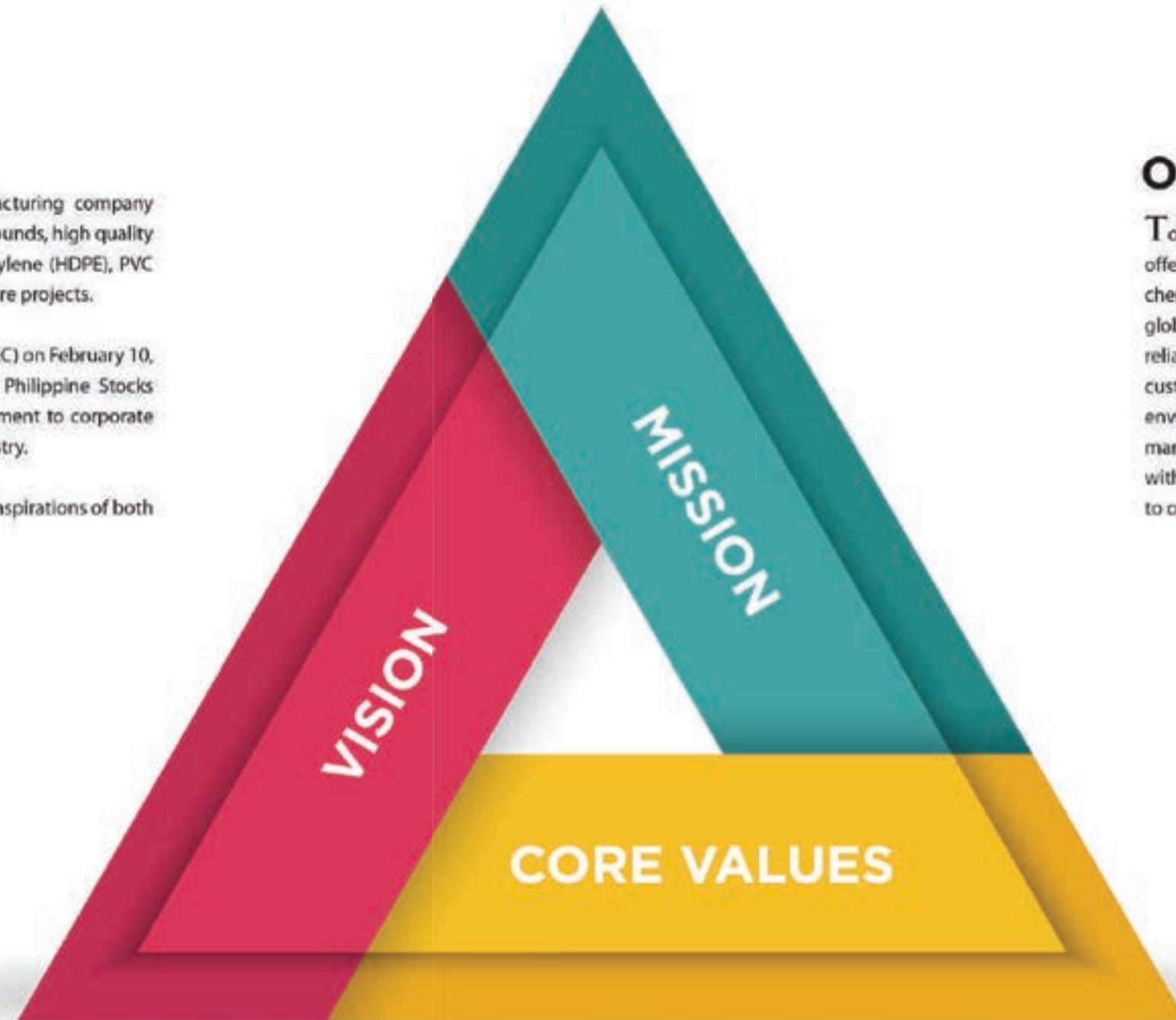
Crown Asia Chemicals Corporation (CROWN) is a publicly listed manufacturing company engaged in the production of premium quality polyvinyl chloride (PVC) compounds, high quality pipes and Fittings made of PVC, polypropylene (PP-R), high-density polyethylene (HDPE), PVC thermal roofing, and for the construction, telecommunication and infrastructure projects.

The company was registered with the Securities and Exchange Commission (SEC) on February 10, 1989, and had its Initial Public Offering (IPO) on April 27, 2015 with the Philippine Stocks Exchange (PSE). Imbued with a constancy of purpose and a strong commitment to corporate governance, It has steadily grown into a major player in the construction industry.

The company's vision, mission and core values embody the commitment and aspirations of both management and its employees.

OUR VISION

To be the leading and preferred manufacturer and supplier of world-class, innovative industrial and chemical products.



OUR MISSION

To strive for market leadership by offering innovative industrial and chemical products that meet or exceed global standards ensuring quality, reliability and value for money for our customers, and upholding a nurturing environment for our employees, while managing the business professionally with integrity, providing good return to our shareholders.

CORE VALUES

C

Committed to integrity in generating profitable returns

R

Reputation for quality, reliability, and value for money

O

Outstanding products that meet or exceed national and international standards

W

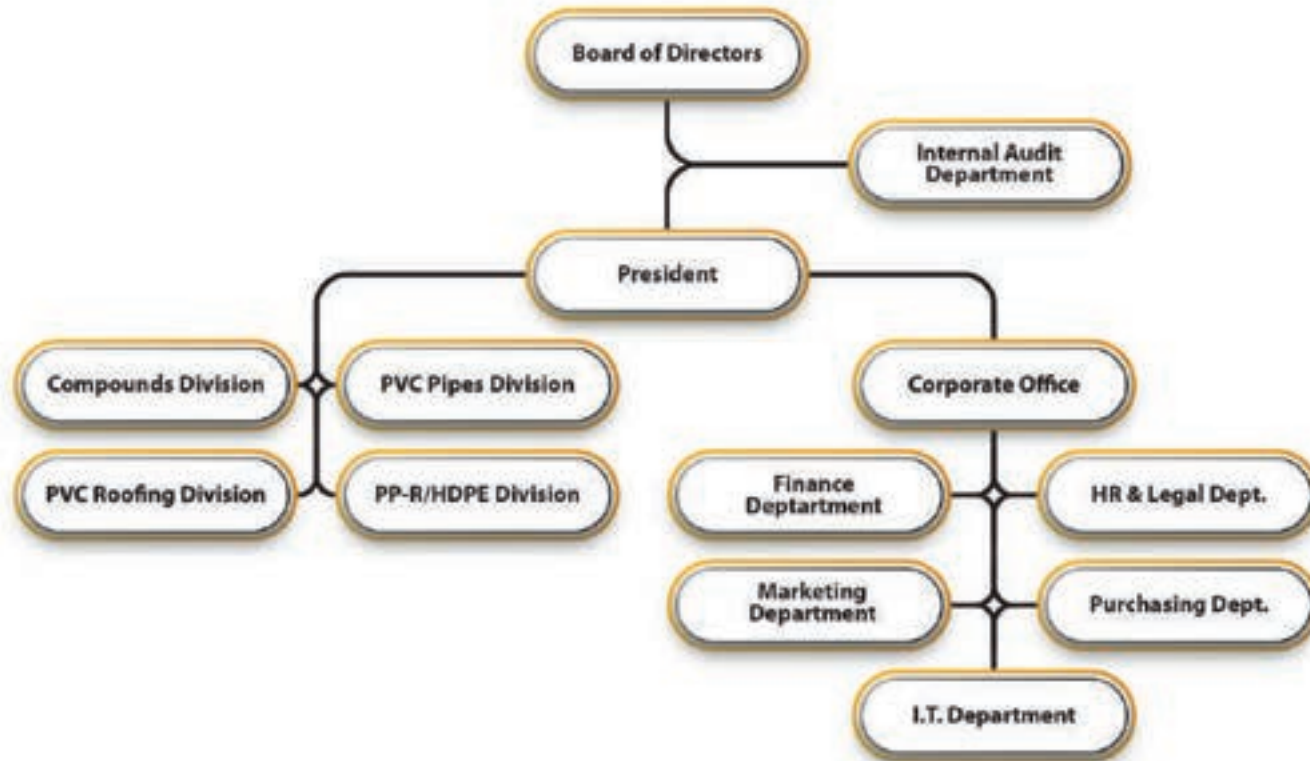
World class products that are innovative and of the latest technology

N

Nurturing our employees to develop their full potential and work productively towards a common goal



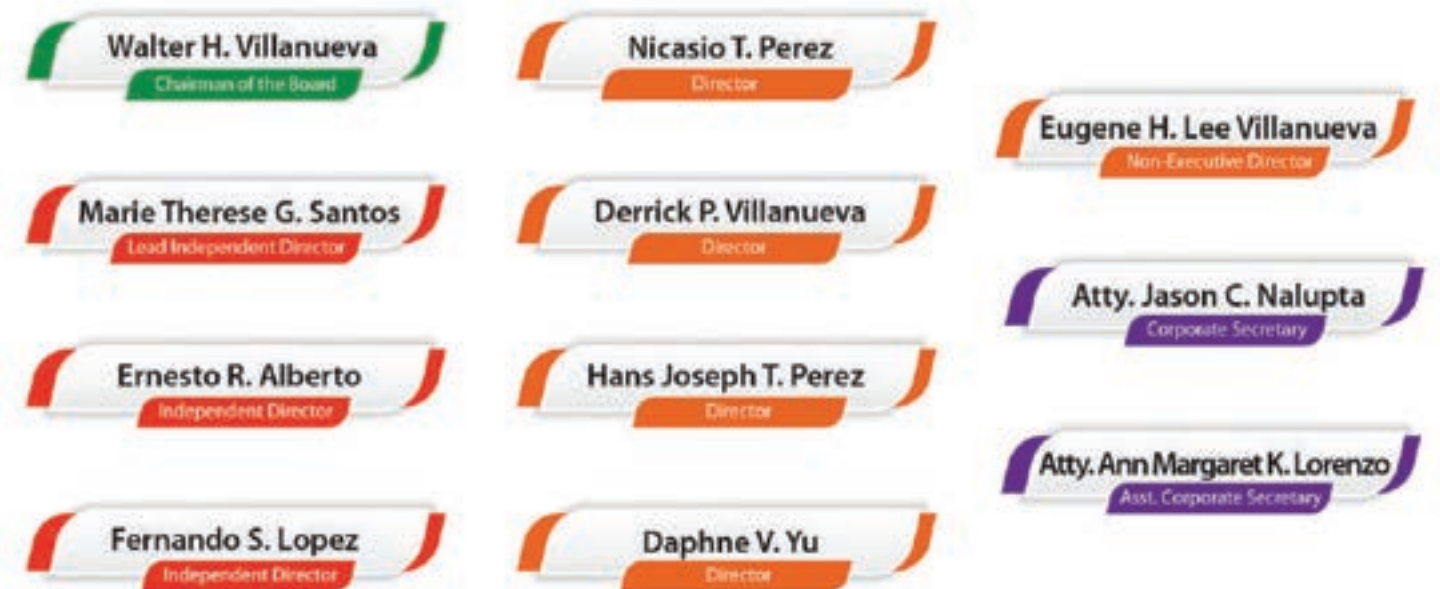
CORPORATE ORGANIZATION



EXECUTIVE OFFICERS



BOARD OF DIRECTORS



COMMITTEES



CROWN VALUE CHAIN

PRIMARY ACTIVITIES



SOURCING

The company sources materials from accredited local and foreign suppliers that adhere to both local and international quality and safety standards.



INBOUND LOGISTIC

The company warehouse manages receiving, quality control, proper keeping/stocking, and inventory of all raw materials and supplies utilized for manufacturing.



OPERATIONS (MANUFACTURING)

Production planning for necessary resources is in place to ensure the manufacture of quality products. Processes involved in the manufacturing of semi-finished goods and finished products are regularly audited to improve production efficiency.

The company manufactures world-class CROWN PVC, HDPE, and PPR pipes and fittings used for public and private infrastructure projects across the country. CROWN's premium PVC compounds are the raw materials used for the production of wires, cables, and various other applications such as containers and packaging.



WAREHOUSE MANAGEMENT

Warehouse management involves running the day-to-day operations of the warehouse from proper stocking, encoding from production to releasing of products to logistics department. This includes receiving and organizing warehouse space, sorting, packaging, scheduling labor, managing inventory and fulfilling orders.



OUTBOUND LOGISTICS

The logistics department handles the distribution, shipping, and delivery to ensure products will reach our customers on time and in good condition.



SALES & MARKETING

The Sales and Marketing teams work together to reach our target market. CROWN uses various channels for product promotions from digital advertising to direct selling. CROWN Pipes and roofing are marketed and sold to contractors, trade partners, wholesalers/dealers, and construction depots. While CROWN Compounds are supplied to export and domestic markets for various product applications.



RECYCLING

Start-up pipes are reprocessed and recycled into different sustainable items for low-impact use.

SECONDARY ACTIVITIES

CORPORATE STRUCTURE AND GOVERNANCE

Good governance leads the company to a healthy balance sheet and profitability, effective implementation of plans, efficient daily operations, dividend contributions to its shareholders, and benefits for its employees. The company is ISO Certified and is Publicly listed on the Philippine Stock Exchange.

HUMAN RESOURCES MANAGEMENT

Employees' health, benefits, and training are priorities to ensure retention and work efficiency.

TECHNOLOGICAL DEVELOPMENT

Systems and technological processes are regularly reviewed to check their relevance and how they can be improved to meet the growing market demand.

PROCUREMENT

Careful planning helps minimize the cost of supply and bulk purchasing. Suppliers' audits are being done quarterly to ensure our suppliers adhere to local and international standards as well as to desirable social values.

MARGIN/VALUE

TOWARDS A SUSTAINABLE FUTURE



In a world where sustainability has moved to center stage, publicly listed Crown Asia Chemicals is leaving no stone unturned to integrate environmental and socio-economic concerns as a strategic approach to make sound business decisions to move forward.

Fresh from its recent recognition as one of Forbes Asia's 200 Best List for 2020, the company is fast-tracking its business concerns to strengthen its inherent strengths, grounded with its commitment to quality, from uncompromised products over the years to the kind of service for customers. It has diversified its product lines to serve its customers with essential solutions to more innovative and economical way.

The ISO 9001:2015-certified company has expanded its product line by adding PP-R and HDPE pipes and fittings to serve the different market requirements. In addition, it has diversified into PVC thermal roofing that offers all-weather roofing suited for a tropical country like the Philippines. Furthermore, it introduced its innovative Crown Septic-Tech, a well-calculated move to offer hassle-free septic system installations that are more economical, particularly for residential and housing projects. Lastly, its premium Compounds have been aligned with more diversified applications of industry clients. Recognizing people as its most important asset, corporate structural alignment is consistently

pursued, providing a continuous flow of job opportunities and employment security for those who share the company's core values for professional growth, thus helping improve the lives of their families.

The company seeks financial sustainability with a comprehensive overview of its own capability. It exercises prudence in extending terms to customers in order to sustain liquidity, and protect all assets, people, machinery, and equipment, ensuring a steady cash flow to weather economic transitions beyond its control and industry challenges.

Management explores various possibilities to prepare for what will come next. It reaches out and adapts to evolving market mindsets, and strikes a balance between fundamentals and new trends while maintaining a competitive edge to stay on the frontline.

Crown supplies major infrastructure and mixed-use development projects being built in modern communities. The company taps other sustainable projects in the green architecture and energy sectors, including windmills and geothermal initiatives. This clearly demonstrates that Crown products are made responsive to market needs beyond conventional requirements in the building industry.

Crown Asia Chemicals is not just about financial profitability and market standing. It addresses corporate social responsibility by supporting the activities of clients that impact certain sectors and the pursuit of environmental preservation.

It extends help to public schools in the community, is part of the value formation of children among marginalized families, and supports tree-planting endeavors to help prevent floods and preserve the environment. Previous years' outreach activities included providing PVC roofing for a quarantine facility in Marikina City, and lumber donations to help rebuild houses and lives among affected residents of calamity areas in Guiguinto Bulacan and Marikina.

In August 2023, Crown Asia Chemicals supported Guiguinto Central School's "Brigada Eskwela" by donating cleaning materials and giving assistance in the preparation for cleanliness and overall safety of students. Employee volunteers sorted out books and modules, fixed and painted chairs and tables.

The company believes in addressing the present when it looks into the future. Again, the unlimited opportunities beckon with various possibilities. Crown Asia Chemicals can look beyond its 34 years by knowing fully well its 'reason for being', mindful of practical realities, and determined to pursue its aspirations and more enlightened visions through earnest sustainability.



CROWN AT A GLANCE

For thirty-four years, CROWN has consistently enhanced its products and services provided by employees, steadfast in our commitment to prioritize safety and quality above all else.



CROWN SUSTAINABLE PRODUCTS



CROWN[®] COMPOUNDS

YOUR PREMIUM QUALITY COMPOUNDS

Crown Asia Chemicals Corporation is recognized as a market leader in PVC compound productions. The company is known for its ability to customize formulations to fit various quality product applications, providing a valuable service to plastic manufacturers.



RIGID



SOFT

CROWN Petrovin offers high-grade CROWN PVC Compounds designed for direct and indirect use across commercial, construction, and telecommunication industries. These ISO 9001-2015 Certified compounds and pellets cater to the diverse needs of plastic manufacturers and related industry clients. Our CROWN Compounds are utilized in the production of a wide range of products including wires and cables, IC tubings, window and door profiles, container packaging, safety tools, sandals and footwear, shrink-pack films, and medical supplies.



WIRES & CABLES



**CONTAINER
PACKAGING**



**WINDOW AND
DOOR PROFILES**



SHRINK-WRAP FILMS



IC TUBINGS



**SANDALS &
SAFETY BOOTS**

Another CROWN Compound brand is the CROWN Technovynyl. CROWN Technovynyl's customization process for PVC compounds involves meticulous collaboration with clients to meet their specific requirements and standards. It starts with the Sales team working closely with the client to understand their needs, as well as the wants and needs of the products' users, including customers and regulatory requirements. The technical department then formulates a custom combination of raw materials accordingly, followed by rigorous testing to adjust the compound to meet the client's specifications. CROWN Technovynyl is the pride of the company, a world-class raw material being exported to suit their intended applications, ensuring high-quality products for clients.

Renowned for their premium quality, CROWN PVC Compounds are manufactured using only high-grade virgin materials, adhering to environmental standards. Each product in our range assures flexibility and reliability, meeting the demands of various unique applications. The inception of CROWN Compound, the company's pioneering product 34 years ago, laid the foundation for fostering business collaborations in a competitive market, establishing us as a trusted partner in the plastic manufacturing industry.

Today, the CROWN Compounds Division is focused on expanding its export operations to high-quality markets like Japan and other potential Asian neighbors. We ensure compliance with international standards and contribute to Sustainable Development Goal 9: Industry, Innovation, and Infrastructure by supplying custom-made raw materials for innovative product development within the plastic manufacturing sector.



CROWN[®] PIPES

PUTTING SAFETY AND QUALITY FIRST

CROWN Pipes exemplifies safety, quality, and sustainability in infrastructure solutions. Each product line is meticulously manufactured to meet stringent national standards and deliver enduring performance across various applications.

Beginning with CROWN Sanitary Pipes and fittings, renowned as the premier choice for plumbing solutions, these products serve as a cornerstone in preserving public health and guaranteeing access to clean water and sanitation. Engineered with precision and durability, CROWN Sanitary Pipes ensure the integrity of plumbing systems, safeguarding against contamination and promoting hygienic environments in homes, businesses, and public facilities. Beyond their primary function, CROWN Sanitary Pipes also play a crucial role to bolster against flooding and other environmental challenges. With their robust construction and reliable performance, these pipes contribute to the development of sustainable cities and communities, ensuring access to essential services like clean water and sanitation for all.

Similarly, CROWN Electrical Pipes and fittings, distinguished by their durability and flame retardant properties, ensure the safety and quality of electrical systems in residential, commercial, and industrial settings. This supports sustainable cities and communities and underscores the importance of reliable infrastructure.

CROWN Telecom products further advance SDG#9 by protecting wires and cables for digital communication, ensuring uninterrupted accessibility. Additionally, they contribute to the safety and quality of electrical systems, echoing the goals of sustainable cities and communities.

The CROWN Pressure Main Blue and CROWN Safe Blue product lines address multiple SDGs. Pressure Main Blue, through its role in providing water supply to irrigation systems and supporting economic growth in industrial, commercial, and agricultural areas and Safe Blue, by facilitating clean water access and promoting good health both demonstrate CROWN's commitment to holistic sustainability.



**CROWN[®]
SANITARY**
(DWV) uPVC PIPES (HD-100)



**CROWN[®]
ELECTRICAL**
uPVC ELECTRICAL CONDUIT PIPES (HD-14)



**CROWN[®]
TELECOM**
POWER & COMMUNICATION DUCT
ADAPTED & REINFORCED



**CROWN[®]
BLUE**
uPVC POTABLE PIPES & FITTINGS (HD-45)



**CROWN[®] PRESSURE
MAIN BLUE**
DISTRIBUTION uPVC PIPES (HD-41)



**CROWN[®]
ENDURO**
SANITARY GRAY PIPES

Moreover, CROWN's adherence to international and national standards emphasizes its dedication to quality and excellence. The minimal environmental impact of PVC pipes, coupled with their long-lasting durability and recyclability, aligns with (Responsible Consumption and Production), further emphasizing CROWN's contribution to sustainable practices.

CROWN Pipes not only prioritizes safety and quality but also actively contributes to advancing the Sustainable Development Goals (SDGs), making them a cornerstone of sustainable infrastructure solutions. As a testament to their impact, CROWN Pipes stands at the forefront of innovation and industry standards, embodying a commitment to excellence that extends beyond functionality to encompass broader societal and environmental goals.

CROWN PPR, Reliable Solutions for Every Water Application.

CROWN PPR Pipes and Fittings offers excellent plumbing solutions, quality, durability, and sustainability. Made from Polypropylene Random Co-polymer (PPR), these pipes and fittings are engineered to meet the diverse needs of residential, commercial, and industrial applications, particularly for hot and cold-water systems. The range includes three variants: CROWN PPR Hydro Plus, CROWN PPR Hydro Flex, and CROWN PPR Hydro Tech, catering to various requirements with sizes ranging from 20mm to 160mm in diameter.

What sets CROWN PPR apart from traditional piping systems is its superior thermal resistance and exceptional chemical stability, ensuring longevity and reliability in diverse environments. The installation process, facilitated by fusion machines, guarantees leak-proof connections, enhancing the overall efficiency and performance of plumbing networks. Moreover, the smooth inner surface of PPR pipes minimizes friction loss and noise, promoting seamless fluid flow.

In addition to its technical prowess, CROWN PPR exemplifies sustainability, aligning with the principles of the Sustainable Development Goals (SDGs). By adhering to relevant standards and certifications, CROWN PPR ensures quality while actively contributing to environmental conservation. The recyclability of PPR further underscores its eco-friendliness, as the material can be melted and reprocessed multiple times without compromising its integrity.



CROWN[®] PP-R

HOT & COLD PIPES & FITTINGS



Through recycling initiatives, used PPR pipes can be transformed into pellets or new pipes, mitigating the demand for virgin raw materials and reducing energy consumption and greenhouse gas emissions associated with conventional pipe production. This closed-loop approach not only minimizes waste but also fosters a more sustainable waste management system by diverting plastic from landfills.

In essence, CROWN PPR Pipes and Fittings epitomize innovation, reliability, and sustainability in plumbing solutions, offering a comprehensive range of products that not only meet stringent quality standards but also contribute positively to environmental stewardship and the achievement of global sustainability goals.



CROWN[®] HDPE

HIGH DENSITY POLYETHYLENE PIPES PNS-4427

CROWN HDPE, Durable, High-Pressure Performance.

CROWN HDPE Pipes and fittings are engineered to deliver durable, high-pressure performance across a wide range of applications. With lengths varying from 6 to 300 meters and diameters from 20mm to 800mm, these pipes boast superior strength and rigidity due to their high-density polyethylene composition. Resistant to corrosion, chemicals, and UV radiation, CROWN HDPE pipes ensure long-term reliability in demanding environments. Their lightweight design facilitates easy handling and transportation during installation, while their excellent flow characteristics and flexibility make them suitable for water supply, sewerage, drainage, gas distribution, industrial processes, and various infrastructure projects. Furthermore, CROWN HDPE pipes exemplify sustainability through their recyclability, contributing to circular economy initiatives and aligning with responsible consumption and production practices.



CROWN HDPE pipes play a crucial role in numerous applications, including water supply, sewerage and drainage systems, irrigation, gas distribution, industrial processes, infrastructure construction, geothermal systems, and mining. Their versatility and reliability are vital for efficient resource management and environmental protection, supporting SDGs 6 (Clean Water and Sanitation) and 12 (Responsible Consumption and Production).

The recyclability of CROWN HDPE further enhances its sustainability credentials, allowing used pipes to be collected, cleaned, and transformed into new products without compromising quality. This recycling process aligns with circular economy principles, reducing plastic waste and reliance on virgin materials while fostering sustainable consumption and production patterns as outlined in SDG 12. Overall, CROWN HDPE pipes represent a sustainable solution for diverse infrastructure needs, embodying principles of resource efficiency, environmental protection, and long-term resilience in line with the SDGs.



CROWN[®]

PVC THERMAL ROOFING

YOUR ALL-WEATHER COOL ROOFING SOLUTION

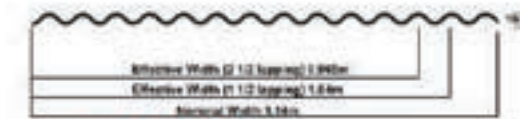
CROWN PVC Thermal Roofing.
Your all-weather cool roofing solution.

CROWN PVC Thermal Roofing is a revolutionary solution designed to provide all-weather comfort and energy efficiency, ranging from homes and offices to warehouses and livestock farms. By incorporating innovative thermal reflective properties, this roofing product significantly reduces the need for cooling devices and lighting, thus promoting lower energy consumption. In alignment with Sustainable Development Goal (SDG) 9 on Industry, Innovation, and Infrastructure, CROWN PVC Thermal Roofing contributes to enhancing industrial sustainability and promoting innovative infrastructure solutions.



CROWN[®] CorrWave
CROWN[®] StrongRib

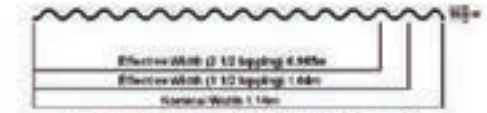
CROWN[®]
uPVC ROOFING
(Unplasticized PolyVinyl Chloride)



CROWN[®] CorrWave



CROWN[®] StrongRib



CROWN[®] SmartRoof



CROWN[®] HeatProtect



CROWN[®] TileTech

CROWN PVC Thermal Roofing contributes to SDG 11 on Sustainable Cities and Communities by creating cooler indoor environments and fostering comfortable living and working conditions. They improve the quality of life for occupants and support the development of sustainable urban areas by mitigating the urban heat island effect. CROWN PVC Thermal Roofing allows individuals and communities can enjoy the benefits of reduced energy costs and enhanced thermal comfort while simultaneously supporting sustainable development goals.



CROWN[®]
ASA LAMINATED
(Acrylic Styrene Acrylonitrile)

In terms of product quality and innovation, CROWN PVC Thermal Roofing undergoes rigorous testing and quality assurance measures to ensure they meet the highest standards of strength, durability, and performance. Continuous research and development efforts are dedicated to enhancing product formulations to meet evolving client needs and industry demands, further solidifying CROWN's commitment to sustainability and excellence.

Overall, CROWN PVC Thermal Roofing stands as a testament to innovation, quality, and sustainability in the construction industry, offering a reliable solution for achieving energy efficiency, thermal comfort, and environmental responsibility. Using these roofing solutions allows individuals and communities to actively contribute to the advancement of sustainable development goals.

CROWN[®] SmartRoof
CROWN[®] HeatProtect
CROWN[®] TileTech



CROWN[®] SEPTIC-TECH

DENR • EFFLUENT COMPLIANT



CROWN SEPTIC TANK,
An Environment-Safe Septic Tank Solution

The CROWN Septic-Tech is the best solution in waste management, providing an environmentally safe and compliant septic tank system in accordance with DENR Administrative Order No. 35, Series of 1990. Engineered for durability and structural integrity, it features a flexible 3-chamber or 2-chamber system with an optional Crown Sewage Treatment Filter System that ensures effluent discharge according to stringent environmental standards. Made from heavy-duty plastic, the tank proves its resilience against heavy loads and offers a capacity of 1200 liters. It is an ideal fit for residential housing projects and compact living spaces.



The CROWN Septic-Tech is easy to install and maintain with a simplified setup that minimizes labor costs as requires only one to two workers. Its hygienic manhole cover for easy access ensures hassle-free maintenance. It channels waste through distinct compartments, promoting optimal digestion and filtration processes for maximum hygiene and environmental protection. The DENR standards-compliant Crown Sewage Treatment Filter System is validated through testing at accredited laboratories. CROWN Septic-Tech is cost-effective compared to conventional septic tanks, making it a practical and sustainable choice for modern waste management requirements.

CAC

Your Clean and Comfort Essentials
SPRING AND SUMMER MODEL SERIES

CLEAN AND COMFORT,
An Environment-Safe Septic Tank Solution

The CAC, toilet & bath essentials (Spring and Summer Series), offer a range of water closets and wash basin (lavatory) options designed with contemporary elegance and space-saving features. These CAC products assure grade-A quality, are ICC certified, and are compliant with PNS 156:2000 specifications for top-notch performance and safety. The water closet models feature a dual flush system for water-saving consumption, while both the water closet and wash basin are stain-resistant and easy to clean, enhancing convenience and maintenance. The Spring Series Water Closet comes with a soft-close toilet bowl cover.



CAC WATER CLOSET
MODEL WC20-01M **ICC CERTIFIED**

- CONTEMPORARY, ELEGANT DESIGN
- GRADE A PRODUCT QUALITY
- PNS 156:2000 SPECIFICATIONS TEST COMPLIANT
- DUAL FLUSH, WATER-SAVING CONSUMPTION (3/16 LITER PER FLUSH)
- STAIN RESISTANT
- EASY TO CLEAN

CAC WASH BASIN
MODEL WB20-02M **ICC CERTIFIED**

- CONTEMPORARY, SPACE-SAVING DESIGN
- GRADE A PRODUCT QUALITY
- PNS 156:2000 SPECIFICATIONS TEST COMPLIANT
- STAIN RESISTANT
- EASY TO CLEAN

The CAC Basin Drain and Bottle Trap ensure easy installation features, requiring only a simple setup process for both Series and detailed installation steps that cover the insertion of O-rings and plastic molds adjustments to fit the height of the lavatory and exit pipe. CAC provides long-lasting reliability for safe and clean comfortable bathrooms.



CROWN Wire and Cable Protector
For Superior Cable Solutions

CROWN Asia Chemicals Corporation recently introduced the CROWN Wire and Cable Protector. The CROWN Wire and Cable Protector is designed to safeguard wires and cables from potential damage caused by heavy foot traffic, furniture, equipment, and other hazards in residential and commercial settings. Constructed from durable materials, this product ensures the safety and security of wires and cables, protecting families, homes, and businesses alike.

With its user-friendly installation process, the CROWN Wire and Cable Protector can be seamlessly integrated into various environments, including offices, homes, commercial, and industrial settings. Whether organizing home spaces, convenience centers, or shielding office wires and cables, this product offers an ideal solution.

CROWN's Wire and Cable Protector is engineered to be heavy-duty, resisting stamping and enduring pressures from strollers, pushcarts, and forklifts laden with heavy products.

Available in diverse lengths and sizes, the CROWN Wire and Cable Protector caters to specific needs, backed by our unwavering commitment to safety and quality, ensuring utmost customer satisfaction. Aligned with the United Nations Sustainable Development Goals (SDGs), particularly SDG#9 (Industry, Innovation, and Infrastructure) and SDG#11 (Sustainable Cities and Communities), CROWN's Wire and Cable Protector contributes to building resilient infrastructure and promoting safe, inclusive, and sustainable urban spaces.

ROADMAP FOR IT SECURITY MANAGEMENT

Crown Asia Chemicals Corporation has continuously addressed IT management requirements by upgrading system facilities and to respond to escalating cyber threats.

A comprehensive Vulnerability Assessment and Penetration Testing was performed during the second quarter of 2023 aimed to identify and rectify potential vulnerabilities within the company's IT infrastructure, thereby enhancing our overall cybersecurity posture.

By addressing vulnerabilities within the inventory system, we have reduced the risk of cyber incidents that could lead to system downtime, data breaches, and resource-intensive recovery efforts. This directly contributes to the sustainability of operations as unwanted incidents are minimized.



Investing in cybersecurity measures through upgrading of edge firewalls protects our financial resources from potential losses. Preventing financial setbacks associated with data breaches or system disruptions ensures our long-term economic sustainability.

Protecting sensitive information through strict data privacy policies enhances our reputation and builds trust with our stakeholders. This in turn, positively influences our relationships with customers, business partners, and the community at large, clearly demonstrating our commitment to responsible and secure business practices.

We recognize the need for continuous improvement as part of our commitment. Future initiatives will include:

Regular Security Audits:

Implementing periodic IT security assessments to stay ahead of emerging threats.

Employee Training:

Enhancing cybersecurity awareness and best practices among our workforce.

Investment in Advanced Technologies:

Exploring and adopting cutting-edge technologies to bolster our defenses.

All these efforts reflect our deep commitment to sustaining the integrity of our digital procedures as we prioritize the security of our company operations.

ECONOMIC PERFORMANCE

Direct Economic Value Generated and Distributed

In the year 2023, Crown Asia Chemicals Corporation continues to be resilient. Despite the impact of high inflation rates, the Company was able to generate revenues totaling Php1,506M with corresponding profit after tax of Php247.85M.

There was a slowdown in infrastructure projects due to high-interest rates affecting the revenue potential of the Company. Revenues went down by 14% but, its impact was mitigated by the Company's cost management measures. Thus, the increase in profit after tax by 8%.

DIRECT ECONOMIC VALUE GENERATED AND DISTRIBUTED					
FY2023	AMOUNTS (IN PHP MILLIONS)				
	FY2023	FY2022	FY2021	FY2020	FY2019
Direct Economic Value Generated (Revenue)	1,506.70	1,760.82	1,740.85	1,117.69	1,433.40
Direct Economic Value Distributed					
Operating Costs	189.51	215.90	168.34	159.98	185.10
Employee Benefits and Wages	134.47	139.50	110.97	85.28	106.90
Payment to Suppliers and Other Operating Costs	1,053.84	1,228.84	1,350.00	647.34	960.00
Dividends Given to Stockholders	54.96	61.06	13.74	24.44	56.38
Interest Payments to Loan Providers	0.11	0.67	0.47	1.32	2.41
Taxes Given to Government, Which Includes All Taxes Incurred and/or Paid to the Government	96.94	97.22	88.02	70.29	73.01

Crown as an Economic Partner

Crown Asia Chemicals Corporation is a domestic corporation that humbly started its operations in Guiguinto, Bulacan. The Company does not only aim to support the country by actively supplying private and public projects and local businesses as well. This is evidently shown by the amount of local purchases both for raw materials and supplies needed for its operations.

YEAR	LOCAL		IMPORT		AMOUNT (IN MILLION)
	AMOUNT (IN MILLION)	PROPORTION (%)	AMOUNT (IN MILLION)	PROPORTION (%)	
FY 2023	509.26	69 %	224.94	31 %	734.20
FY 2022	674.06	70 %	291.09	30 %	965.15
FY 2021	945.29	76 %	298.90	24 %	1,244.19
FY 2020	495.28	77 %	152.06	23 %	647.34
FY 2019	574.41	61 %	373.19	39 %	947.60

CROWN is committed to strict implementation of appropriate standards in the highest ethical manner. Set goals and targets of each department are well monitored and maintained. Being responsible for attaining the internal department's purchase order satisfaction, it targets the selection, evaluation, and audit of suppliers. Canvassing of at least three (3) suppliers, and evaluation based on cost, quality, support, staff attitude, and delivery efficiency are among the basis of consideration. An audit is conducted to resolve some issues and concerns.

The team conducts surveys of suppliers in areas of environmental observation, forced labor, child labor, policies on hiring and taking care of employees' welfare as well as bribery and corruption policies and data protection.

Members of the purchasing team are given training and seminars to enhance their purchasing skills and capabilities to improve and develop negotiation techniques and strategies to consistently perform duties and responsibilities as best as they can.



Customers as Growth Partners

Crown Asia Chemicals Corporation has deemed its customers as growth partners. The Company maintains a strong relationship with them by providing quality products and on-time delivery. Surveys are regularly conducted to ensure that products and customer services are aligned with their expectations.

In 2023, the Compounds Team reached 97.78% satisfaction from its clients, specifically covering product quality and reliability, value for money, handling of sales and technical inquiries, and delivery services. Favorable feedback indicated that clients will purchase again and intend to become loyal customers.

Pipes Division Project and Trade Sales customers survey showed generally positive results with a 'Yes' response of 99.74% compared to the operational objective of 95% customer satisfaction. The favorable rating on product quality and service includes aspects of durability, aesthetics, and safety. It also covered accessibility and ease of doing business, understanding customer needs, courtesy and politeness, and friendly dealings. Specific areas of concern are taken constructively, discussed, and handled with an appropriate course of action to continuously improve operations.

Anti-Corruption

INTEGRITY. This is one of the Company's values that is being observed in all its business dealing with customers and suppliers.

Company Core Values

- C** - Committed to integrity in generating profitable returns
- R** - Reputation for quality, reliability, and value for money
- O** - Outstanding products that meet or exceed national and international standards
- W** - World-class products that are innovative and of the latest technology
- N** - Nurturing our employees to develop their full potential and work productively towards a common goal

The Company has carefully crafted the corporate creed for employees which includes integrity as one of the values that each employee must show in his/her work and in dealing with peers, superiors, customers, and suppliers.

- A** - Attitude **C** - Commitment **E** - Excellence **I** - Integrity

The Company also has policies such as the NO GIFT policy to instill the value of integrity a Whistleblowing policy to encourage any individual to disclose matters pertaining to actual and potential violation of laws and/or Company policies and procedures.

As of to date, there have been no incidents of corruption involving employees, directors, and/or business partners.

Training on Anti-Corruption Policies and Procedures

DISCLOSURE	QUANTITY	UNITS
Percentage of employees to whom the organization policies and procedures have been communicated to	100	%
Percentage of business partners to whom the organization's anti-corruption policies and procedures have been communicated to	100	%
Percentage of directors and management that have received anti-corruption training	100	%



Incident of Corruption

DISCLOSURE	QUANTITY	UNITS
Number of incidents in which directors were removed or disciplined for corruption	0	%
Number of incidents in which employees were dismissed or disciplined for corruption	0	%
Number of incidents when contracts with business partners were terminated due to incidents of corruption	0	%

ENVIRONMENTAL PERFORMANCE

Resource Management

CROWN's commitment to environmental responsibility and resource management is evident in its 2023 Sustainability Report, aligning with SDG 13 Climate Action, SDG 7 Affordable and Clean Energy, and SDG 12 Responsible Consumption and Production. CROWN continues to focus on managing its environmental impact across its operations, contributing to preserving natural resources, including land, air, water, and ecosystems.



Energy Consumption Within the Organization

CROWN, as a responsible manufacturer, actively mitigates the impacts of resource extraction by efficiently using energy, water, and raw materials. The company seeks sustainable sourcing practices and bulk purchases of diesel and gasoline, aligning with our Supply Chain Management.

Efforts to reduce energy consumption include regular machine check-ups, adoption of LED lighting, and using PVC Thermal Roofings to create cooler work environments.

Energy Consumption Within the Organization

DISCLOSURE	QUANTITY	UNITS
Energy Consumption (Gasoline)	51,772.15	LITERS
Energy Consumption (Diesel)	87,289.25	LITERS
Energy Consumption (Electricity)	2,708,315.00	KW/HOURS

Reduction of energy consumption

DISCLOSURE	QUANTITY	UNITS
Energy Consumption (Gasoline)		LITERS
Energy Consumption (Diesel)		LITERS
Energy Consumption (Electricity)		KW/HOURS

Water Conservation and Recycling

CROWN observes water conservation, implementing measures such as regular machine checks to minimize leaks and recycling wastewater for chiller usage. The company's cooling system ensures the machine does not overheat and it recycles wastewater.

All machines are being checked regularly to lessen water wastage and energy consumption.

Water consumption within the organization

DISCLOSURE	QUANTITY	UNITS
Water Withdrawal	10,824.14	CUBIC METERS
Water Consumption	9,246.53	CUBIC METERS
Water Recycled and Reused	6,914.05	CUBIC METERS

Materials used by the organization

DISCLOSURE	QUANTITY	UNITS
Materials used by weight or volume		
• Renewable		KG / LITERS
• Non-renewable	70.35980049	KG / LITERS
Percentage of recycled input materials used to manufacture the organization's primary products and services		

Air Quality and Transportation Management

To mitigate air pollutants, CROWN monitors and manages its machinery and transportation fleet, ensuring regular maintenance and compliance with environmental standards.

Air Pollutants

DISCLOSURE	QUANTITY	UNITS
NO _x	0.11	KILOGRAMS
SO _x	0.54	KILOGRAMS

Solid and Hazardous Wastes

CROWN production operations contribute to a cleaner environment and reduce environmental impact, aligning with our dedication to sustainability. The company's production processes prioritize sustainability by minimizing the generation of toxic waste. The raw materials and finished products do not pose toxicity risks. CROWN is committed to environmental responsibility, thus burning of PVC fall-downs is strictly prohibited by policy. CROWN implements efficient recycling practices, transforming these materials into new, sustainable products.

Solid Waste

DISCLOSURE	QUANTITY	UNITS
Total solid waste generated		
• Reusable	500.82	KILOGRAMS
• Recyclable		KILOGRAMS
• Composted	163.69	KILOGRAMS
• Incinerated	0	KILOGRAMS
• Residuals/Landfilled	287.03	KILOGRAMS
Total		KILOGRAMS

Effluents

DISCLOSURE	QUANTITY	UNITS
Total volume of water discharges	61.52	CUBIC METERS
Percentage of wastewater recycled	47.55	PERCENTAGE



Ecosystem Preservation and Biodiversity

Operational sites are strategically situated within or near areas of significant biodiversity value outside officially designated conservation zones. While not located within protected or conservation zones, CROWN prioritizes the protection or restoration of habitats in these areas. CROWN positions its operations strategically to mitigate adverse effects on ecosystems and biodiversity, ensuring environmental preservation and safeguarding the community it is situated. CROWN sites are carefully chosen to be in areas deemed safe for human activities, forests, water bodies, and other natural elements.

Ecosystem and Biodiversity

DISCLOSURE	QUANTITY	UNITS
Operational sites owned, leased, managed in, or adjacent to protected areas of high biodiversity value outside protected areas	NONE	
Habitats protected or restored	NONE	HA
IUCN17 Red Lists species and National Conversation lists species with habitats in areas affected by operations	NONE	

Environmental Compliance

CROWN has consistently adhered to environmental laws and regulations for 34 years, aligning with UN SDG and compliance with laws such as Presidential Decree No. 1586, Republic Act No. 8749, and Republic Act No. 9003 which shows the company's commitment to environmental responsibility.

Non-compliance with Environmental Laws and Regulations

DISCLOSURE	QUANTITY	UNITS
Total amount of monetary fines for non-compliance with environmental laws and/or regulations	0	PHP
No. of non-monetary sanctions for non-compliance with environmental laws and/or regulations	0	#
No. of cases resolved through dispute resolution mechanism	0	#

Other Eco-friendly Practices:

CROWN practices additional eco-friendly initiatives, including creative paper reuse, recycling PVC fall downs, and improving production processes for efficiency and reducing environmental impact.

CROWN's 2023 Sustainability Report demonstrates its dedication to environmental initiatives, contributing to the achievement of multiple Sustainable Development Goals.



CROWN's Eco-Friendly Products

CROWN Enduro represents sustainability and circular economy principles, playing a vital role in promoting these ideals by providing cost-effective and resilient pipe solutions, especially within mass housing projects that serve significant portions of the population. By addressing the specific needs of these demographics, the initiative serves a dual purpose: meeting essential requirements and advancing sustainability objectives. Through the provision of durable and high-quality pipe systems, CROWN Enduro minimizes the need for frequent replacements, thereby extending the lifespan of homes, buildings, and infrastructure while reducing resource consumption and expenses over time.

CROWN Enduro stands as a prime example of waste reduction principles in action, incorporating recycled materials into its production to actively contribute to broader sustainability initiatives. This green initiative emphasizes CROWN's commitment to environmental management programs and further solidifies its reputation as a responsible corporate citizen, supporting its dedication to both economic viability and environmental responsibility.

CROWN's diverse product range, which includes PVC compounds and piping systems, demonstrates the company's longstanding dedication to providing quality solutions for various applications, spanning from construction and infrastructure to manufacturing and household use. With a firm focus on sustainability, CROWN products minimize environmental impact through their durability, recyclability, and efficient manufacturing processes, contributing significantly to Sustainable Development Goal 12 on Responsible Consumption and Production.

SOCIAL PERFORMANCE



Employee Management

DISCLOSURE	QUANTITY	UNITS
Total Number of Employees	234	#
Number of Female Employees	73	#
Number of Male Employees	161	#
Attrition Rate	20.03%	RATE
Ratio of the Lowest Paid Employee Against Minimum Wage	0	RATIO

Attrition Rate: 20.23% (calculated as the difference between the number of new hires and turnovers divided by the average of total employees in 2022 and 2023).

CROWN ensures no one is left behind. CROWN follows the mandatory increases and alignment for minimum wage employees. Employee salaries range from the minimum wage rate to the standard market rate, contingent upon their skills, expertise, and experience. Whenever the National Wages and Productivity Commission issues a wage order, CROWN promptly implements the mandated increase. Additionally, CROWN has an annual salary increase program for employees based on labor union agreements, along with special increases for top-performing employees.

Employee Benefits

LIST OF BENEFITS	Y / N	Percentage of female employees who availed for the year	Percentage of male employees who availed for the year
SSS	Y	10%	19%
PhilHealth	Y	2%	4%
Pag-ibig	Y	8%	32%
Parental Leaves	N	0	0
Vacation Leaves	Y	25%	46%
Sick Leaves	Y	20%	45%
Medical Benefits (aside from PhilHealth) Health Maintenance Organization	Y	34%	75%
Housing Assistance (aside from Pag-ibig) Staff House	Y	0.39%	6.70%
Retirement Fund (aside from SSS)	Y	0.30%	0
Further Education Support	N	0	0
Company Stock Options	N	n/a	n/a
Telecommuting	N	n/a	n/a
Flexible-Working Hours	N	n/a	n/a
(Others) 14th Month Pay	Y	9%	3%

CROWN prioritizes the welfare of the employees by ensuring that they receive all government-mandated benefits. From social security coverage to health insurance, retirement plans, and leave entitlements, it guarantees that the employees enjoy comprehensive benefits that meet or exceed regulatory requirements.

Employee Training and Development

DISCLOSURE	QUANTITY	UNITS
Total training hours provided to employees	1,928	#
a. Female employees	720	HOURS
b. Male employees	1208	HOURS
Average training hours provided to employees		
a. Female employees	2.64	HOURS/EMPLOYEE
b. Male employees	1.60	HOURS/EMPLOYEE

As part of this commitment, CROWN conducts an annual ISO awareness seminar to ensure compliance with ISO standards and safe information processing practices. Technical training is tailored based on employees' expertise to bolster their operational skills, particularly among engineers, operators, and plant managers, promoting skill development and ensuring adherence to industry standards within our workforce.

Labor-Management Relations

Approximately 59.2% of our workforce benefits from the protections and advantages afforded by Collective Bargaining Agreements (CBAs), demonstrating our commitment to fair and transparent labor practices. These agreements serve as a vital mechanism for upholding and respecting the rights and interests of our employees. Through collective bargaining, both the company and its employees can negotiate terms and conditions of employment, including wages, benefits, working hours, and other pertinent issues, fostering a collaborative and mutually beneficial relationship.

To promote effective communication and engagement with our workforce, CROWN conducts regular consultations on employee-related policies. These consultations, totaling 12 sessions, provide a platform for open dialogue and feedback, allowing employees to voice their concerns, suggestions, and preferences regarding workplace policies and practices. The Labor Management Committee (LMC) facilitates dialogue and collaboration between management and employees, fostering a cooperative approach to addressing workplace issues and improving labor relations.

CROWN is committed to advancing technical expertise and professional proficiency through a variety of training and development programs. By utilizing blended learning methodologies, which integrate virtual and in-person seminars, managerial coaching, and practical training sessions, CROWN ensures a comprehensive approach to skill enhancement. In 2023, the training efforts amounted to a total of 1,928 hours, with a detailed breakdown showcasing participation among female and male employees, reflecting the company's dedication to fostering inclusive learning opportunities.

DISCLOSURE	QUANTITY	UNITS
Percentage of employees covered with Collective Bargaining Agreements	59.20	PERCENT
Number of consultations conducted with employees concerning employee-related policies	12	HOURS

Diversity and Equal Opportunity

CROWN has a diverse workforce composition, with 31% female and 69% male employees, showcasing the company's commitment to inclusivity and equal opportunities. Additionally, CROWN employs 10 individuals from indigenous communities or vulnerable sectors, further enriching the diversity of the CROWN Family.

CROWN prioritizes equal opportunities for career development, regardless of gender, ethnicity, or background. Promotion criteria are based solely on individual performance, ensuring fairness. Gender equality and diversity are ingrained in the company's culture, evident in career advancement initiatives. Through succession planning and corporate re-engineering, CROWN aims to enhance performance evaluation and offer opportunities for growth and rewards.

As of December 2023, our managerial ranks exhibit a balanced distribution, with 10% male and 5% female representation. Similarly, our supervisor roles reflect a 4% female and 3% male composition, demonstrating our commitment to gender parity in leadership positions. In technical roles, while the majority are male technical experts (15%), we also ensure a 3% female representation among the total employee count, further emphasizing our dedication to gender equality. Both male and female employees, along with managers and supervisors, undergo comprehensive training programs encompassing basic managerial and supervisory skills, mentoring, and coaching. Additionally, leadership training initiatives are extended to rank-and-file employees, nurturing their potential for career progression and fostering a culture of inclusivity and empowerment across all levels of the organization.

DISCLOSURE	QUANTITY	UNITS
% of female workers in the workforce	31	%
% of male workers in the workforce	69	%
Number of employees from indigenous communities and/or vulnerable sector ^a	31	#

Workplace Conditions, Labor Standards, and Human Rights

Occupational Health and Safety

DISCLOSURE	QUANTITY	UNITS
Safe Man-Hours	585,936	MAN-HOURS
No. of work-related injuries	8	#
No. of work-related fatalities	0	#
No. of work-related ill-health	145	#
No. of safety drills	2	#

In its commitment to maintaining high standards of workplace conditions, labor standards, and human rights, particularly in occupational health and safety, CROWN diligently records and monitors safety performance, logging a total of 585,936 safe man-hours. Notably, there have been zero fatalities within the workforce, proving the company's dedication to employee safety.

Acknowledging the inevitability of work-related injuries, CROWN prioritizes swift and effective responses to minimize their impact, with records indicating a mere 8 work-related injuries, each promptly addressed to ensure the well-being of employees. Additionally, the company emphasizes proactive measures for employee health, conducting safety drills to reinforce Occupational Safety and Health (OSH) protocols and procedures.

In addition to the proactive approach to safety, the company prioritizes the overall health and well-being of the employees through comprehensive annual physical check-ups. These check-ups encompass dental and eye examinations, surgical procedures, medical consultations, and drug tests, ensuring that our workforce remains healthy, vibrant, and ready to contribute to our collective success. CROWN remains committed to upholding workplace conditions, labor standards, and human rights, safeguarding the welfare of the employees as they drive the company forward.



Labor Laws and Human Rights

DISCLOSURE	QUANTITY	UNITS
No. of legal actions or employee grievances involving forced or child labor	0	#

Since 1989, CROWN has reported no instances of legal actions or grievances concerning forced labor, child labor, or violations of human rights. This highlights the company's commitment to upholding labor laws and human rights standards, ensuring a fair and ethical work environment for all employees.

STRATEGIC CAPEX INVESTMENTS: FOSTERING SUSTAINABILITY ACROSS OPERATIONS



In the fiscal year 2023, the company maintained a steadfast commitment to integrating sustainability into its operations. It strategically allocated capital expenditures (CAPEX) to bolster initiatives aimed at fortifying employee well-being, ensuring safety, and augmenting operational efficiency. These investments stand as a testament to our dedication to cultivating a sustainable workplace while mitigating our environmental footprint.

1. Prioritizing Employee Well-being and Safety:

CROWN's investments were directed towards establishing a secure and health-focused work environment, which included:

- Construction of a nursing clinic to provide prompt medical care, and champion employee health and overall well-being.
- Developing designated parking zones for cars, trucks, and motorcycles, guaranteeing organized and secure parking facilities.

2. Infrastructure and Building Enhancements:

CROWN's focus centered on infrastructure and facilities to ensure employee safety and safeguard critical equipment. Initiatives encompassed:

- Implementing building improvements to fortify safety measures and further support employee well-being.
- Enhancing our facilities to preserve equipment integrity and promote longevity.



3. Employee Service Advancements:

CROWN's commitment to the welfare of the employees and executives, we introduced services to facilitate convenience and well-being. This includes:

- Car service provisions for employees and executives, promoting transportation and reducing environmental impact.
- Routine maintenance of company vehicles, ensuring optimal conditions for safe and reliable transportation. This meticulous upkeep not only ensures safety but also minimizes emissions and fuel consumption, aligning with broader sustainability objectives.



4. Machinery and Equipment Optimization:

CROWN's acquisitions and improvements in machinery and equipment stand at the core of the operational strategy. These strategic investments enable the company to optimize operations, curtail downtime, and reduce resource wastage. Every selection and upgrade are meticulously aligned with sustainability principles, emphasizing energy efficiency and reduced environmental impact. These initiatives reinforce the commitment to operational excellence while minimizing the ecological footprint.

These capital expenditures profoundly mirror CROWN's commitment to fostering a workplace that places paramount importance on employee safety, health, and overall well-being. Simultaneously, these initiatives are instrumental in driving operational efficiency. CROWN is dedicated to monitoring and assessing the outcomes of these investments and will continue to make sustainability a core aspect of future strategic endeavors.

SUPPLY CHAIN MANAGEMENT



In the dynamic landscape of the global business environment, organizations are increasingly recognizing the pivotal role of sustainable practices, and nowhere is this more evident than in supply chain management. As a leading player in the chemical and construction industry, Crown Asia Chemicals Corporation is committed to not only delivering innovative and high-quality products but also to doing so in a manner that upholds environmental, social, and economic responsibility. This commitment is not merely a choice but a necessity as we navigate an era where sustainability is intertwined with corporate success.

At Crown Asia Chemicals Corporation, we believe that a sustainable supply chain is the backbone of our long-term success, influencing not only our bottom line but also our contribution to the well-being of suppliers, customers, and the communities in which we operate. We aim to provide stakeholders with a deeper understanding of our commitment to sustainable supply chain management, outlining the key areas where we have made strides and the challenges we continue to address.



Procurement Policies

CROWN upholds both local and international standards to ensure the consistent delivery of high-quality products and services. Internationally, our compliance with ISO 9001:2015 reinforces a customer-centric approach, top management involvement, a process-oriented mindset, and continuous improvement. Locally, adherence to the Bureau of Product Standard elevates the competitiveness of our products in domestic and export markets, enhancing sales and reputation.

CROWN has established a comprehensive quality policy aligned with the organization's purpose and context, supported by a strategic direction. The core values of Attitude, Commitment, Excellence, and Integrity (ACE-I) guide every employee, fostering

ethical business practices. The Purchasing Team, crucial to our supply chain, operates with goals and targets, ensuring adherence to specified purchase requirements. Selection, evaluation, and audit of suppliers are meticulously conducted, contributing to the maintenance of a Masterlist of Approved Suppliers.

CROWN invests in the continuous development of the Purchasing Team, providing training to enhance their skills and capabilities. The team is equipped with resources, including machinery and technologies, to consistently perform their duties at the highest standard.

The Purchasing Team faces various risks, such as potential supply chain disruptions, insufficient lead time, misrepresentation by suppliers, unethical practices, breaches of confidentiality, and external factors like natural calamities or unstable government policies. To address these risks, CROWN has set policies and procedures. Ethical conduct is paramount, with the Purchasing Team mandated to refuse any unethical practices. The establishment of product lead times and supplier audits ensures the smooth flow of transactions, while violations may result in the removal of a supplier from the Masterlist of Approved Suppliers.

CROWN recognizes the opportunity presented by the importation of raw materials, a significant component of our finished goods. Importing raw materials enhances the company's profit margins. To capitalize on this opportunity, CROWN explores increasing order quantities and bulk ordering to reduce transaction costs. After establishing trust with suppliers, renegotiating contracts for larger quantities at reduced costs and favorable payment terms are considered.

This overview highlights Crown Asia Chemicals Corporation's commitment to sustainable supply chain management, emphasizing compliance, risk mitigation, and seizing opportunities to secure a resilient and environmentally responsible future.



Production Management

CROWN supplies an array of world-class products such as CROWN Pipes, PVC Thermal Roofing, and more, which find application in public and private infrastructure projects across the country. Moreover, our CROWN premium PVC compounds are not only sought after locally but are also exported, contributing to the production of wires, cables, containers, packaging, and various other applications globally.

Our Production Team stands as a testament to our dedication to delivering superior products reinforcing Crown Asia Chemicals Corporation's position as a leader in the industry. The production leads play a key role in maintaining a delicate balance between monitoring and enhancing the efficiency of activities, managing materials and staff resources, adhering to budgets, keeping manufacturing on schedule, within budgetary constraints, and achieving the desired output—products that exemplify world-class quality. Our Production Leads supported by skilled manpower embodies the essence of excellence and resilience within the company and serve as the driving force behind our commitment to delivering quality products.

Warehouse Management

A proper warehouse management system is essential for optimizing daily product movements, resource control, and proper storage to facilitate efficient inventory monitoring. The strategic management of storage locations, coupled with precise documentation, minimizes errors and mitigates inventory losses.

To address potential risks and enhance efficiency, the CROWN Warehouse team successfully implemented a Warehouse Location Monitoring System. This system ensures end-to-end monitoring of inventory units throughout the warehouse, leading to swift and accurately documented pull-out for delivery and precise stock inventory reports for production.

Proper stocking of supply and raw materials minimizes human errors and it significantly reduces inventory losses. This streamlines warehouse processes, reinforcing Crown Asia Chemicals Corporation's commitment to continuous improvement and ensuring the timely delivery of superior products to our customers.



Logistics Management

Recognizing the pivotal role of logistics in operational excellence and with a commitment to sustainable business practices, CROWN strategically implemented an upgrade of its logistics equipment in 2023. This significant move aligns with the core principles of good corporate governance and directly contributes to the smooth operation and meeting the needs of our customers. The enhancement of logistics equipment reflects CROWN's commitment to building resilient infrastructure, promoting sustainable industrialization, and fostering innovation.

By optimizing supply chain management, CROWN contributes to more sustainable consumption and production patterns, reducing waste and environmental impact. The focus on sustainability in logistics aligns with efforts to combat climate change, contributing to reduced carbon emissions and a more environmentally friendly supply chain.

Acquiring new delivery trucks as part of the logistics upgrade is a strategic move to ensure on-time delivery to customers. This not only enhances customer satisfaction but also aligns with SDG 9 by improving the efficiency of the distribution network, contributing to economic growth and sustainable infrastructure. CROWN's logistics equipment upgrade goes beyond operational enhancements; it reflects a commitment to sustainable business practices adhere to meet the needs of our customers.

RELATIONSHIP WITH THE COMMUNITY

Green Initiative

CROWN Asia Chemicals Corporation initiated its green initiative through the 'Seedlings Donation and Planting' project in partnership with the Guiguinto Municipality and the Municipal Environment and Natural Resources Office (MENRO).

Committed to corporate social responsibility and environmental sustainability, CROWN continues its mission to create a positive impact on society through responsible actions. This initiative aims to support gardening and sustainable agriculture by providing Malabar spinach, also known as Alugbati, seedlings, and actively participating in their planting. Alugbati is not only a valuable addition to the community's diet but is also known for its nutritional profile and health benefits.

CROWN's objectives include organizing a successful seedlings donation and planting event, raising awareness about cultivating home gardens and instilling a sense of environmental responsibility



among employees and the community. The project also encourages the consumption of Alugbati, a leafy green vegetable that offers numerous health benefits. It is an excellent source of vitamins A and C, iron, and antioxidants, making it a nutritious and sustainable choice for individuals and their families.

CROWN collaborated with the Guiguinto Municipality and its MENRO office, which provided the land and will ensure the care and maintenance of the planted garden. CROWN provided the Malabar Spinach or Alugbati seedlings and employee volunteers for planting.

This project aligns with the United Nations Sustainable Development Goals (SDGs), particularly SDG 15: Life on Land, by supporting reforestation and preventing land degradation. It also embodies SDG 17: Partnerships for the Goals, demonstrating effective collaboration to achieve a common environmental objective.



CROWN'S SUPPORTS BRIGADA ESKWELA



On August 15, 2023, the CROWN Family joined Brigada Eskwela at Guiguinto Central School, demonstrating our commitment to community development. Our employee volunteers worked alongside the local community to prepare the school for the upcoming academic year, ensuring a safe and conducive learning environment. Activities included sorting books and modules, cleaning and maintenance, chair and table restoration, and room arrangement. This annual event, which began in 2021, showcases our dedication to social responsibility and community engagement while supporting the growth and development of future generations.

On August 31, 2023, as part of our ongoing dedication to education and community sustainability, the CROWN Family donated cleaning materials to Tuktukan Elementary School's Brigada Eskwela. This initiative aims to assist the school in preparing for the upcoming academic year, reinforcing our commitment to supporting education and fostering sustainable communities.



CROWN'S LIFEBLOOD INITIATIVE

Twice a year, CROWN collaborates with the National Children's Hospital and the Philippine Red Cross as part of the CROWN Lifeblood Initiative. During these events, CROWN employees generously donate blood to the National Children's Hospital and the Philippine Red Cross, aligning with the United Nations Sustainable Development Goals (SDGs), particularly SDG 3: Good Health and Well-being.

This selfless act has a profound impact on the community, as the donated blood provides safe, unpaid transfusions for hematology patients and those undergoing surgeries at the National Children's Hospital and to those who will request from Redcross. By supporting this initiative, CROWN contributes to ensuring access to quality healthcare services, a key aspect of SDG 3.



Blood donation offers numerous health benefits to the donors themselves. It helps in reducing the risk of heart disease, preventing cancer, enhancing mental health, and promoting the formation of new blood cells. For CROWN employees, this initiative is not only a noble act but also serves as a wellness activity, positively impacting emotional health, reducing stress, aiding in weight loss, improving skin aging, and helping prevent conditions like Hemochromatosis and cancer.

The enthusiasm shown by employees, during these blood donation drives, demonstrates their commitment to community health and well-being. Their participation sparks anticipation for future donation schedules, further highlighting the success and impact of the CROWN Lifeblood Initiative.



CROWN'S CSR PARTNERSHIP

CROWN is committed to supporting professional groups in their efforts to uplift communities. Through collaborative initiatives, we strive to address various community needs, including education, healthcare, and economic empowerment. Together, we work towards creating a better and more sustainable future for all.

Geanux Golf Tournament for a Cause



Geanux Systems organized its inaugural Leg Golf Tournament for a Cause, with the proceeds going towards the humanitarian programs of the Holy Face of Jesus Church in Hidalgo Street, Quiapo District, Manila. Crown Pipes, a company driven by its core values, actively participated in the 1st Leg Golf Tournament held on March 17, 2023, at the Villamor Air Base Golf Course. Crown Pipes firmly believes in giving back and sharing its blessings with the community it serves.

ADGO Design Foundation Invitational Golf Tournament



The ADGO Design Foundation Inc. is a non-stock and non-profit organization dedicated to supporting talented and deserving college students who have faced financial challenges, particularly in the field of Architecture. Crown Pipes, a company committed to making a positive impact, participated in the 1st ADGO Design Foundation Invitational Golf Tournament held on March 30, 2023, at the Sta. Elena Golf and Country Club. By joining this event, Crown Pipes demonstrated its commitment to helping the next generation of bright and talented college students who will shape the future of our country.

UAP South Triangle Arkitulong 2023

UAP QC South Triangle organized an outreach program and medical mission, and Crown Pipes wholeheartedly supported this event from May 27 to 28, 2023. The selected community for assistance was Sitio Dampay, Barangay Salza, Palauig, Zambales. Crown Pipes actively contributed to the efforts of UAP QC South Triangle Chapter in their mission to address hunger and provide vital medical assistance for the well-being of the community. By participating in this event, Crown Pipes aimed to make a positive impact by helping to alleviate hunger and improve the health and overall quality of life of the residents of Sitio Dampay.



A&E Golfers Club, Inc. Golf Tournament

The Architects and Engineers Golfers Club, Inc. organized the A&E Golf Tournament to raise funds generously donated to various charities, which have received support from the club for many years. Crown Pipes, a company dedicated to making a positive impact on its community, sponsored the golf tournament to provide assistance to these deserving charities and extend a helping hand to those in need.

Bamboo Shrine Golf for a Cause

Bamboo Shrine initiated a fundraising project aimed at supporting various initiatives, particularly those focused on aiding children who have suffered burns and injuries. Crown Pipes actively participated in the Golf Tournament for a Cause organized by Bamboo Shrine on October 18, 2023, at the Veterans Golf Course in Quezon City.



ANC Hardware / Ilove Project

I Love Project organized an outreach program focused on providing nutritious food to the nearby community and providing assistance and support to those in need. This initiative showcases ANC Hardware and Crown Pipes' dedication to creating a world where no one goes hungry, and where everyone has access to necessities for a healthy and fulfilling life.

CUSTOMER MANAGEMENT

At CROWN, sustainability extends beyond environmental initiatives to encompass the relationships we build with our valued customers. This Sustainability Report for the year 2023 highlights our dedication to customer engagement, satisfaction, and the responsible management of customer relationships.

Surveys



We believe in the power of feedback to drive continuous improvement. Throughout the year, we conducted comprehensive surveys for both our B2B and B2C customers. The insights gathered have been instrumental in shaping our strategies, enhancing our products and services, and ensuring that we are meeting and exceeding customer expectations.

Addressing Customer Concerns

Our commitment to customer satisfaction goes beyond surveys. We understand that addressing concerns promptly is crucial. Our customer support teams, along with our dedicated sales and technical team, work diligently to address and resolve all customer concerns in a timely and efficient manner.



Technical Excellence

CROWN technical team plays a vital role in ensuring that our products and services not only meet but exceed industry standards. By investing in continuous training and development, we empower our technical experts to stay ahead, providing innovative solutions to our customers and contributing to their success.

As a result of our customer-centric approach, we are proud to report a 97% average in overall customer satisfaction scores for the year. This is a testament to our dedication to delivering exceptional customer experiences. We believe that a satisfied and engaged customer base is fundamental to the long-term success and sustainability of our business. As we embark on another year, we remain committed to elevating the customer experience and creating value for all stakeholders.

CROWN'S MARKETING

CROWN believes in a holistic marketing approach that goes beyond promoting our quality products. Our marketing strategies are designed not only to reach our target customers effectively but also to address their needs and ensure their satisfaction.

Social Media Engagement for Enhanced Customer Experience



CROWN also optimizes digital platforms to provide a seamless and user-friendly experience for our customers. From direct inquiries to browsing our products to completing transactions, we prioritize simplicity and efficiency to enhance customer satisfaction.

Through active engagement on social media platforms, we foster a sense of community around our brand. Regular updates, interactive content, and timely responses to customer inquiries contribute to a positive online presence and strengthen our relationship with our customers anywhere in the country.

Support for Events with Advocacies and Community Involvement

We actively participate in events and advocacies that align with our values and resonate with our target audience. By supporting causes that matter to our customers, we not only contribute to positive social change but also build a stronger emotional connection with our community. Sponsorship and active participation in relevant events enhance our brand visibility. This not only exposes our products to a broader audience but also allows us to connect with potential customers in person, fostering a deeper understanding of their needs.

Collaborative marketing efforts with professional groups and dealers amplify our reach and impact. By working together on promotional campaigns and events, we create a unified message that resonates with our target audience. Regular communication with professional groups and dealers allows us to gather valuable insights and feedback. This two-way communication ensures that our marketing strategies align with market needs and customer expectations.

At CROWN marketing is not just about selling products; it's about building lasting relationships with our customers and partners. By leveraging digitalization, supporting events and advocacies, and providing support to professional groups and dealers, we aim to create a customer-centric marketing ecosystem. Our commitment to customer satisfaction remains at the forefront of all our marketing endeavors, ensuring that we not only meet but exceed the expectations of our valued customers.

COMMITMENT IN SUPPORTING PROGRESS

Expanding Horizons: Crown Pipes Gains Momentum with Strategic Partnerships

CROWN Pipes Modern Trade is making waves in the Philippine market through strategic partnerships and steady growth. An initial collaboration with AllHome, has multiplied to 37 branches across the Philippines, and Builders Warehouse contributing 9 branches in Luzon, CROWN Pipes has firmly established itself as a major provider of construction-related products available in major retail stores.



Continuous Growth with AllHome

CROWN Pipes Modern Trade's journey began with its initial partner, All Home, a company that has shown continuous growth and currently boasts an impressive network of 37 branches spread across the Philippines. This partnership strengthened CROWN Pipes' market presence and also enabled it to tap into diverse consumer demographics, making its products easy to find for home and office construction needs.



Luzon Expansion Through Builders Warehouse

Builders Warehouse, with its 9 branches strategically located in Luzon, has played a crucial role in CROWN Pipes' expansion in the northern part of the country. This partnership has not only facilitated accessibility for customers but has also contributed to the economic development of the regions it serves. Builders Warehouse's commitment to quality products and services aligns seamlessly with CROWN Pipes Modern Trade's mission to provide value and excellence to its customers.



New Heights with Wilcon Depot

In a significant development, CROWN Pipes Modern Trade has recently welcomed Wilcon Depot as a new partner. Wilcon Depot, with 15 branches in the National Capital Region (NCR) and nearby provinces, brings a wealth of experience and a solid reputation in the construction and home improvement sector. This strategic alliance strengthens CROWN Pipes' foothold in key urban markets and enhances its product offerings, catering to a broader spectrum of customers in the construction industry.

With the addition of Wilcon Depot and the consistent growth of All Home and Builders Warehouse, CROWN Pipes Modern Trade is poised for even greater success in the Philippine retail landscape. The strategic expansion across different regions and collaborations with industry leaders position CROWN Pipes Modern Trade as an adaptable and customer-centric retail option for the construction industry. Aligning with the United Nations Sustainable Development Goals, this growth contributes to economic development and access to quality products, fostering a sustainable and inclusive environment for the construction sector.

CROWN PARTNERS

CROWN has been steadily expanding its reach from Luzon to Mindanao, increasing its network of partners across the Philippines. With this growth, the company has built a collaboration with over a thousand partners, spanning from dealers to wholesalers, and from provincial to national depots. This partnership network not only amplifies CROWN's presence nationwide but also signifies a unified force driving the company's success. Through collective efforts and shared goals, CROWN and its partners are confident in their ability to continue thriving in the dynamic Philippine market.



PARTNERSHIP WITH PROFESSIONAL GROUP



CROWN collaborates with professional groups to strengthen partnerships, enhance expertise, and foster a sense of community among partners. Through shared knowledge and resources, these collaborations empower partners to navigate challenges and seize growth opportunities. By prioritizing strategic alliances, CROWN emphasizes its commitment to fostering mutually beneficial relationships within its community, reaching more clients, and building strong professional groups.

Putting Safety and Quality First



WE SUPPORT PROGRESS AND ECONOMIC GROWTH

Crown Asia Chemicals Corporation has been actively involved in significant projects including supplying pipes for the 33-kilometer Metro Manila Subway project, announced in October 2022.

Additionally, the company has undertaken projects to enhance production capacity at its Bulacan plant, involving rehabilitation of machineries, logistics expansion, acquisition of new steel molds, and facility expansion.

These actions reflect Crown Asia Chemicals Corp's commitment to contributing to economic growth, generating employment opportunities, and supporting various industries such as construction and utilities.

DIGITAL COMMUNICATION

CROWN facilitates connectivity among individuals through its Telecom Pipes. Digital communication is essential for efficient and sustainable transactions, enabling the rapid and precise transfer of vast amounts of data crucial for thriving social and business networks.

TELECOMMUNICATION INFRASTRUCTURE

MOBILITY AND TRANSPORT

Establishing an effective transportation infrastructure is vital for linking diverse regions and facilitating the exchange of people, goods, and services. This infrastructure is crucial for fostering trade, commerce, and tourism, thereby driving overall development. CROWN supplies pipes and fittings for key transportation infrastructure projects, aiding economic advancement and enabling smoother movement of people, goods, and services. Through these initiatives, current and upcoming transport networks will eliminate delays in deliveries, interruptions in travel, and shortages of goods.

CAVITE - LAGUNA EXPRESSWAY (CALAX)

NLEX-SLEX CONNECTOR ROAD SECTION 1

SKYWAY STAGE 3 & 4 Q.C

C5 SOUTH LINK EXPRESSWAY

NAIA EXPRESSWAY

ALTERNATIVE ENERGY

Demand for clean, sustainable energy rises, solar, hydro, and other forms of energy plants are emerging nationwide. These advancements allow consumers to embrace alternative power generation, spanning from residential homes to commercial establishments and industries. Such investments promise not only reasonable returns over time but also contribute positively to our environment's well-being.

ISABELA BIOMASS POWER PLANT

CITICORE SILAY SOLAR POWER PLANT

SOLAR PHILIPPINES SOLAR POWER PRODUCERS

SAN BUENAVENTURA POWER PLANT

MERALCO SUB STATION RENOVATION

GATEWAYS

The Philippine government welcomes both domestic and international travelers. It remains committed to advancing its tourism and transportation infrastructure through ongoing construction projects. These seek to transform the country into a seamless gateway for leisure, business, and all forms of travel within its borders. Within the transportation sector, CROWN Pipes plays a crucial role, contributing to various projects such as railways, subways, and expressways, thus supporting the nation's connectivity and mobility objectives.

METRO MANILA SUBWAY PROJECT

NORTH SOUTH COMMUTER RAILWAY

CLARK INTERNATIONAL AIRPORT

MRT 7

TOURISM

The Philippine tourism sector is experiencing a resurgence, characterized by the opening of new hotels and the construction of additional recreational businesses. This trend is driven by society's growing enthusiasm for exploration, dining out, and relaxation. Prominent hotel developers rely on CROWN Pipes for its top-notch quality products, ensuring safety, security, convenience, and comfort for their establishments.

NUSTAR RESORT AND CASINO

MARRIOTT HOTEL

SOLAIRE RESORT & CASINO

MANILA POLO CLUB

SISIMAN BAY

HEALTH AND WELLNESS

Every nation requires a populace in good health, and it is the government's responsibility to safeguard the well-being of its citizens. In the Philippines, there have been enhancements in healthcare services, including the refurbishment of aging hospitals and the establishment of new health facilities and medical centers. CROWN Pipes play a vital role in ensuring the convenience, safety, and security of these healthcare facilities, benefiting both medical staff and patients alike.

MAKATI MEDICAL CENTER

UST HOSPITAL

MARQUEE DOCTORS MEDICAL CENTER

ACE MEDICAL CENTER

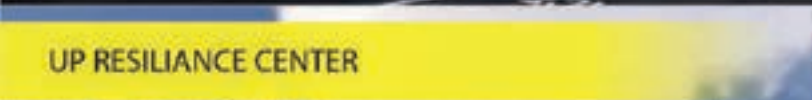
THE MEDICAL CITY ILOILO

EDUCATION

The government and private entities strive for academic excellence by bolstering the education system and upgrading facilities to ensure quality education for all. Educational institutions are constantly enhancing their services, offices, facilities, and infrastructure to create a secure and conducive learning environment for Filipino youth.



DELA SALLE HIGH SCHOOL BUILDING



UP RESILIENCE CENTER



FAR EASTERN UNIVERSITY



NEW ERA UNIVERSITY



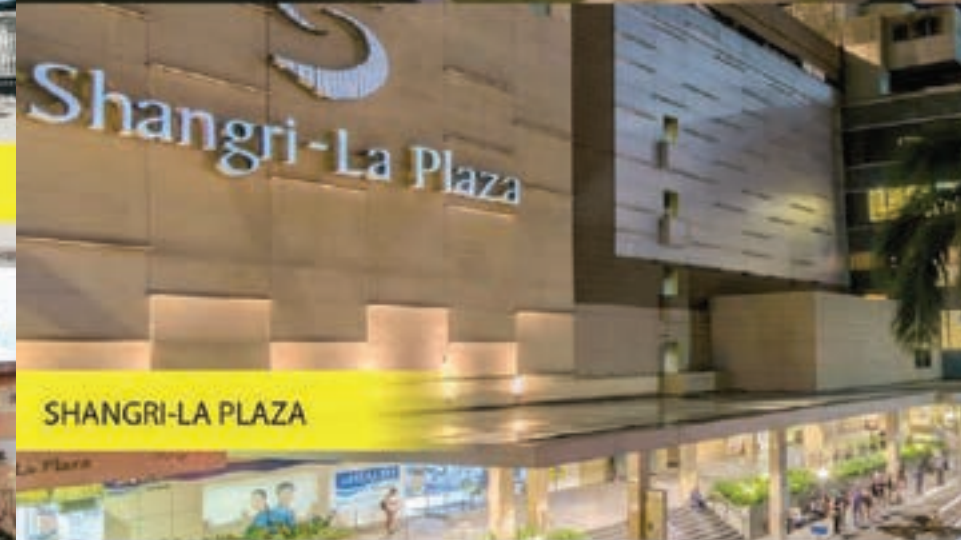
PIO DEL PILAR HIGH SCHOOL

COMMERCIAL

CROWN Pipes contributes to the development of shopping malls, enhancing convenience and providing comfortable lifestyle experiences for the community. Leading mall developers are consistently constructing commercial establishments in metropolitan cities and provinces to cater to a broader customer base and offer convenience in rural areas. These world-class commercial complexes prioritize using only the highest quality construction materials.



ESTANCIA MALL



SHANGRI-LA PLAZA



CITYMALL NORTHTOWN



GREENHILLS SHOPPING CENTER

WORK SPACES AND RESIDENCES

VERTIS NORTH

CROWN offers a range of high-quality products, from pipes to roofing, septic solutions, and bathroom essentials, catering to condominiums, offices, and residences alike. As a trusted and forward-thinking partner, CROWN is committed to providing comfort and quality for the next generation of Filipino homeowners. With the ongoing development of condominium projects, we strive to meet the evolving housing needs in both rural and urban areas. Contractors and designers consistently recommend our durable materials for creating long-lasting residential buildings that stand the test of time.

BRIDGETOWNE CAMPUS ONE

LIGHT 2 RESIDENCES PHASE 1
PODIUM & TOWER 1 EDSA

BONIFACIO STOP OVER

CHELSEA PARKPLACE

TOWNSHIPS

Township Developments represent the future of property and home ownership, offering a blend of convenience and modern living in both urban and provincial areas. Property developers provide residents with access to a wide array of facilities, catering not only to living needs but also to work, leisure, education, religion, and health and wellness. CROWN Pipes, along with our comprehensive range of construction-related products, play an integral role in these township developments across the Philippines, ensuring quality and reliability in every aspect of home construction and infrastructure.

NEW CLARK CITY

NEOPOLITAN

CATALINA LAKE RESIDENCES

CIRRUS AT BRIDGETOWN

ROSEWOOD POINTE

PH1 & PH2

WATER SOURCES

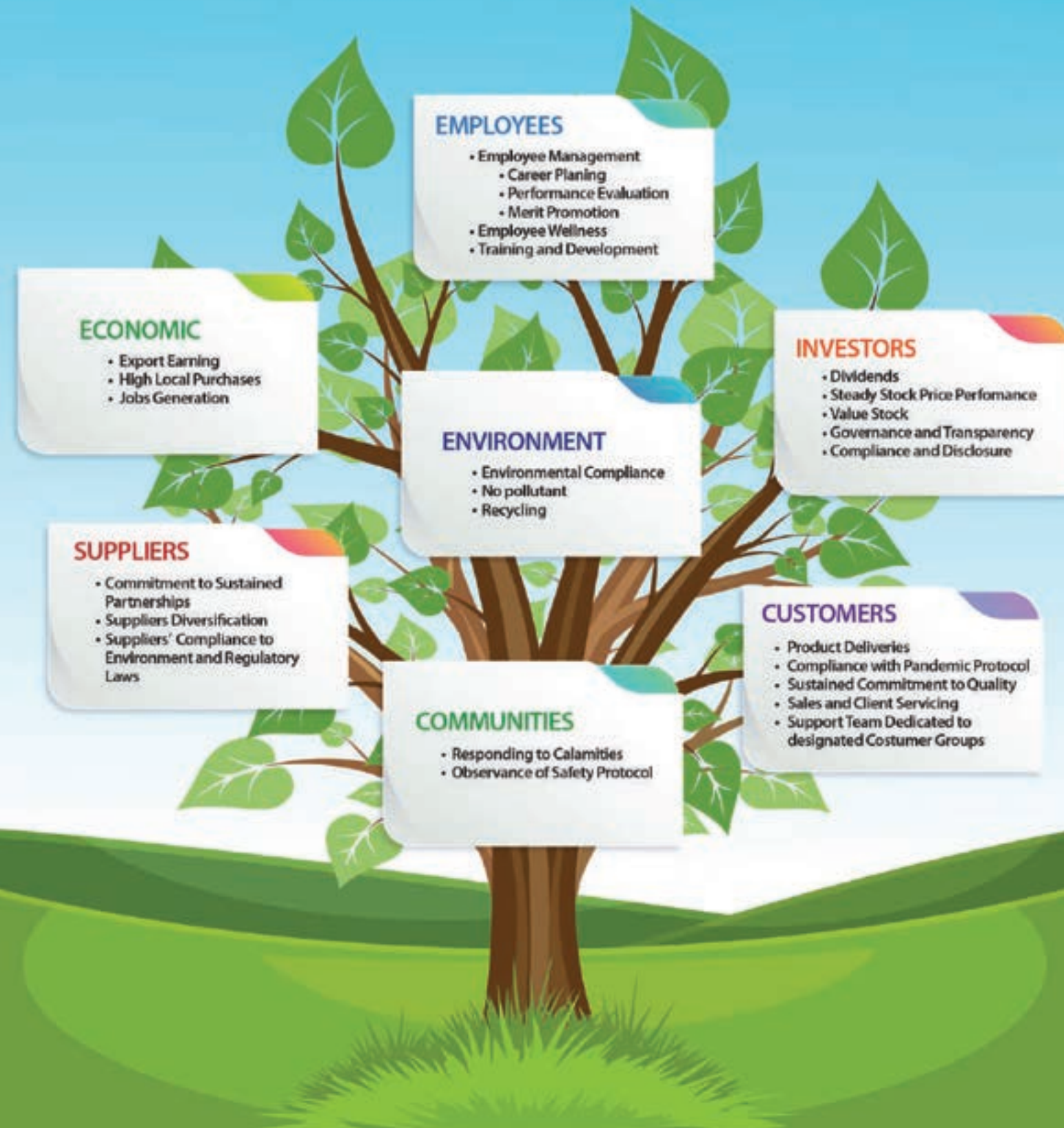
CROWN's range of PPR, HDPE, Infrablue, and Safe Blue pipes and fittings play a crucial role in facilitating the delivery of clean water resources to both rural and urban areas, ensuring reliability and safety for all. Through the development of water resources and irrigation, sustainable solutions have provided access to clean water for communities in the farthest regions, as well as high and remote areas. The enhancement of water supply, sanitation, and proper water management not only improves economic growth but also enhances the health and well-being of the population.

WAWA DAM

CHICO RIVER PUMP IRRIGATION PROJECT

ANGAT WATER TRANSMISSION IMPROVEMENT PROJECT

MALITUBOG-MARIDAGAO IRRIGATION PROJECT





CROWN ASIA CHEMICALS CORPORATION®

MAIN OFFICE / PLANT : Km. 33 McArthur Highway, Tuktukan, Guiguinto Bulacan, Philippines

ADMIN OFFICE : Rm. 508 President Tower, 81 Timog Avenue, Quezon City • Tel No: 8294-2071 • Fax No: 3412-0642

PLANT : ITC Compound, Canumay East Valenzuela City, Metro Manila • Tel No. : 8277-0880

Email: sales@crownpvc.com.ph • sales@crownroofing.com.ph • salesppr@crownpvc.com.ph • septic-tech@crownpvc.com.ph

Website : www.crownpvc.com.ph